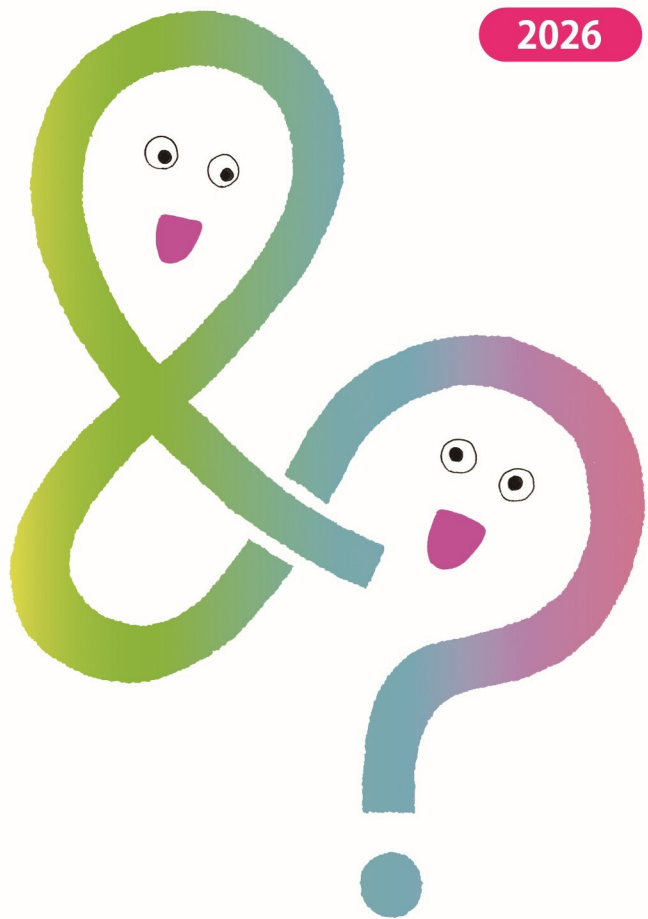


# Learn Languages and Explore Cultures

## Multilingual Multicultural Learning Support

2026



Published by Center for International Education and Exchange, Institute for International Initiatives  
Cooperation: Library, Graduate School of Humanities/School of Letters/School of Foreign Studies,  
Center for Education in Liberal Arts and Sciences (CELAS),  
Center for Multilingual Education, D3 Center,  
Center for International Affairs, Graduate School of Engineering

Language			Campus			
J	E	M	T	S	M	ON
Japanese	English	Multilingual	Toyonaka	Suita	Minoh	Online

Activity				
Speaking	Writing	Reading	One-on-One	Group

### 1 Learning Support Desk

Library

J E M T S M ON

Learning Supporters, teaching assistants affiliated with the library, are available in person, online, and via web form to give you advice on class assignments, studying abroad, and graduate school admission, and to check your Japanese writing.

### 2 Extensive reading with e-Books

Library

J E ON

We have electronic versions of extensive reading materials, which are written with selected vocabulary for each reading level so that readers can progress without a dictionary. Materials are available in English and Japanese. Accessible on and off campus.

### 3 Multilingual Café

Center for Education in Liberal Arts and Sciences (CELAS)

E M T

The Multilingual Café is held during lunch break at Quartier Multilingue in the CELAS building, on Toyonaka campus. Through practicing English, German, French, Spanish, Korean, and Chinese, you can interact not only with international students but also with participants from various faculties and grades.

### 4 OU Multilingual Plaza

Center for Multilingual Education / Center for International Education and Exchange, Institute for International Initiatives

J E M T S ON

This is a self-access learning center supporting the learning of 25 languages. It offers conversation sessions in English, Japanese, Chinese, and Korean, as well as events and workshops related to multicultural and multilingual understanding. Self-study space, language learning advising, and Japanese language tutoring are also available.

### 5 Tandem Learning Project

Graduate School of Humanities/ School of Letters

J E M T ON

Tandem Learning gives you to pair up with a partner who is 1) fluent in the language you learn and 2) learning the language you are fluent in, and to learn from each other. You are free to design your learning style. The best part is that you get to make friends with people from different languages and cultures.

### 6 Japanese • English • Other Languages Café

Center for International Education and Exchange, Institute for International Initiatives

J E M T S M

B.S.P. organizes various language cafes at lunch time on 3 campuses (Supported by CIEE). Japanese, English, and other languages cafes are available where you can enjoy group-style conversation. They also serve as a great opportunity to meet students from various countries/regions, faculties, and years.

### 7 Language Support Desk

Center for International Affairs, Graduate School of Engineering

E S ON

We offer individualized support with native English instructors for three types of sessions: conversation, writing, and presentations.

### 8 Academic English Support Desk

Graduate School of Humanities / School of Foreign Studies

E S ON

We provide students with personalized English coaching to support their research activities, such as preparing for English presentations at international conferences, writing English research papers, and practicing conversations for before and after presentations as well as Q&A sessions. Our service is also available for practicing English conversation in medical settings and everyday situations.